

# HANSAR

## BANGKOK

### ABOUT HANSAR

The name Hansar is taken from the ancient Sanskrit language and translates to “being in the moment of pure happiness and joy”.

At Hansar, luxury is the comfort of feeling at home, engaging with warm genuine Thai hospitality, dining in sophisticated food and beverage outlets, relaxing at Luxsa Spas and simply being at home.



### OUR ROOMS

Hansar Bangkok features 94 Suites

- Studio Suite: 59 sqm | 32 Suites
- Urban Suite: 71 sqm | 33 Suites
- Edge Suite: 77 sqm | 15 Suites
- Vertigo Suite: 82 sqm | 12 Suites
- Loft Suite: 125 sqm | 2 Suites (duplex)

### GUEST ROOM FACILITIES

- Complimentary mini bar
- Free wifi
- Complimentary breakfast
- Air Conditioning
- Green Wall (in Urban & Edge Suites)
- Kitchenette (Studio suite)
- Security safe
- Work table

### OUR OUTLETS

- Eve Restaurant (fine dining)  
Open 6:00 pm - 10:30 pm (closed on Sunday)
- Elefin Coffee (modern Thai cafe)  
Open daily: 7:00 am - Midnight
- Rouge Bar  
Open daily: Noon - Midnight
- Zest Pool Bar  
Open daily: 06:00 am - 10:00 pm

### FACILITIES

- Pool & Fitness  
Open daily: 6:00 am - 10:00 pm
- Luxsa Spa  
Open daily: 10:00 am - 10:00 pm

### MEETING & EVENTS

- The Penthouse: 43th floor | 331 sqm | max 40 guests
- The Skyterrace: 19th floor | 220 sqm | max 170 guests
- Suksan: 8th floor | 112 sqm | max 60 guests
- Pampleon: 8th floor | 160 sqm | max 150 guests
- Hansar: 8th floor | 243 sqm | max 150 guests
- Pirom: Mezzanine floor | 51 sqm | max 12 guests
- Prempree: Mezzanine floor | 25 sqm | max 8 guests

### LOCATION

Hansar Bangkok is conveniently located in the heart of the city  
HANSAR BANGKOK HOTEL

3/250 Soi Mahadlekluang 2, Rajadamri Road,  
Bangkok, 10330, Thailand

- Tel: +662 209 1234
- E mail: [info@hansarhotels.com](mailto:info@hansarhotels.com)
- Website: [www.hansarhotels.com](http://www.hansarhotels.com)

### GETTING HERE

#### • FROM THE AIRPORT

Hansar Bangkok is approximately 28 km away from Suvarnabhumi International Airport (BKK) and 23 km away from Don Mueang International Airport (DMK)

#### PUBLIC TRANSPORT

##### • BY BTS (SKYTRAIN)

Within 200 meters is the closest BTS Skytrain Station Ratchadamri.

##### • BY MRT (METRO)

1 kilometer from Hansar Bangkok is the MRT Metro Station Silom.

#### PRIVATE TRANSPORT

##### • BY TAXI

Always available at the airport and cost approximately 400 THB per trip. Charges for toll fees are added to the fare on the meter.

# HANSAR

## SAMUI

### ABOUT HANSAR

The name Hansar is taken from the ancient Sanskrit language and translates to “being in the moment of pure happiness and joy”. We believe in delivering a luxury resort and spa experience for every one of our guests.

Hansar Samui is for those who share the desire to live life in full color – especially turquoise waters and stretches of golden sand.



#### OUR ROOMS

Hansar Samui features 74 rooms

- Sea View: 50 sqm | 54 rooms
- Sea View XL: 75 sqm | 14 rooms
- Beachfront: 67 sqm | 6 rooms

#### GUEST ROOM FACILITIES

- Air Conditioning
- Freestanding terrazzo bathtub (in Sea view XL and Beachfront rooms)
- Satellite television
- Complimentary wifi
- Hair dryer
- IDD/Direct dial lines
- Private mini bar (chargeable)
- Security Keycard
- Electronic safe
- Walk-in rain shower
- Daybed

#### OUR OUTLETS

- The Chill lounge  
Open daily: 11:00 am - Midnight
- H Bistro  
Breakfast: 06:30 am - 10:30 am  
Lunch: 11:30 am - 03:00 pm  
Dinner: 06:00 pm - 11:00 pm
- Beach bar and Pool Deck  
Beach bar: 30 seats: 10:00 am - Midnight  
Pool Deck: 40 seats: 7:00 am - 7:00 pm  
(food service from 10:30 am - 06:00 pm)

#### RESORT FACILITIES

- Pool & Beach: 7:00 am - 7:00 pm
- Complimentary wifi in public areas
- Fitness Centre: 7:00 am - 10:00 pm
- Luxsa Spa: 10:00 am - 10:00 pm
- Laundry
- International Restaurant
- Library/Lounge
- Meeting Facilities
- Gift Shop
- Transportation
- Travel and Tour assistance
- Sightseeing

#### MEETING

- Azure room: 3rd floor | 127 sqm | max 90 guests

#### LOCATION

Situated just 10 minutes from the Island's international airport, neighboring a charming fishermen's village.

HANSAR SAMUI

101/28 Moo1, Bophut, Koh Samui,  
Suratthani, Thailand 84320

- Tel: +66 77 245511
- E mail: [reservation@hansarsamui.com](mailto:reservation@hansarsamui.com)

#### GETTING HERE

##### • FROM THE AIRPORT

Approximately 1h with from Bangkok to Samui Airport or 1h30 from Surat Thani Airport and then take shuttle and ferry to Koh Samui.

##### • BY TRAIN

From Hua Lampong Station in Bangkok to Surat Thani Station with daily trains and then shuttle bus and ferry to Koh Samui.



# HANSAR

PRANBURI

## ABOUT HANSAR

The name Hansar is taken from the ancient Sanskrit language and translates to “being in the moment of pure happiness and joy”. As a secluded beach house Hansar Pranburi provides the perfect mix of intimate luxury, natural beauty and adventure.



### OUR ROOMS

Hansar Pranburi features 17 rooms

- Sea View: 31 sqm | 3 units
- Sea View XL: 37 sqm | 6 units
- Honey Moon: 61 sqm | 1 unit
- Garden View: 32 sqm | 3 units
- Garden View+Terrace: 32 sqm | 3 units

### GUEST ROOM FACILITIES

- Air Conditioning
- Satellite TV
- Complimentary wifi
- Tea and coffee making facilities
- Security safe

### HOTEL FACILITIES

- The Dining room
- The Swimming Pool

### LOCATION

HANSAR PRANBURI

223-224 Moo 5, Sam Roi Yot,  
Prachuakhirikhan 77120, Thailand

- Tel: +66 2091234
- E mail: [info@hansarhotels.com](mailto:info@hansarhotels.com)
- Web: [www.hansarhotels.com](http://www.hansarhotels.com)

### GETTING HERE

#### • FROM THE AIRPORT

Approximately 45 minutes with 4 scheduled flights daily from Bangkok to Hua-Hin Airport (HHQ) followed by shuttle to Pranburi.

#### • BY TRAIN

From Hua Lampong Station in Bangkok to Pranburi Station with daily trains.

#### • BY CAR

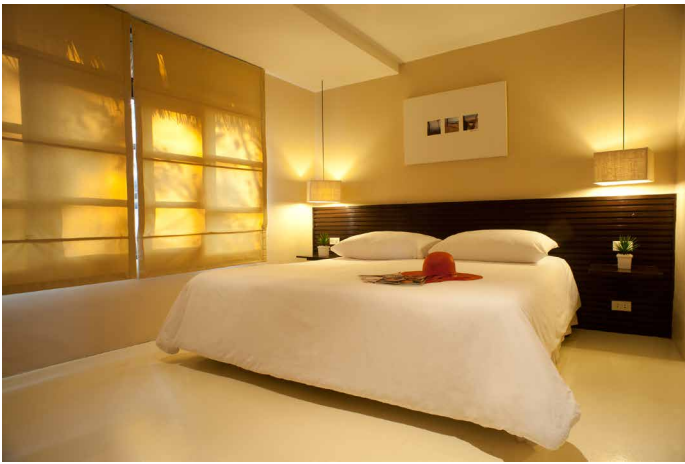
Take 2.5 - 3 hours from Bangkok along the Thonburi-Pakthor Road (No. 35 Highway Road) to Pranburi (approx 250 km).

# HANSAR

## CHA AM

### ABOUT HANSAR

The name Hansar is taken from the ancient Sanskrit language and translates to “being in the moment of pure happiness and joy”. The quiet beach, the serene atmosphere, the lush tropical gardens are what we love, the tranquil sense of privacy is what we cherish.



### OUR ROOMS

Hansar Cha Am features 35 Villas, 49 rooms

- One Bedroom Garden: Villa 50 sqm | 17 units
- One Bedroom Deluxe Villa: 55 sqm | 3 units
- One Bedroom Beachfront Villa: 80 sqm | 2 units
- Two Bedroom Garden Villa: 100 sqm | 10 units
- Two Bedroom Beachfront Villa: 120 sqm | 2 units
- Three Bedroom Beachfront Villa: 150 sqm | 1 units

### GUEST ROOM FACILITIES

- Air Conditioning
- IDD telephones
- Satellite TV
- Complimentary wifi
- Hair dryer
- Tea and coffee making facilities
- Security safe
- Private wooden patio

### HOTEL FACILITIES

- The Dining room
- The Swimming Pool
- Spa Treatment
- Function room

### MEETING

- Rina1: 1264 sqm | max 150 guests
- Rina2: 264 sqm | max 80 guests

### LOCATION

HANSAR CASUARINA CHA AM  
33 Moo 3, Tumbon Puk-Tien,  
76130 Petchaburi, Thailand

- Tel: +66 3244 3000
- E mail: [office@hansarchaam.com](mailto:office@hansarchaam.com)
- Web: [www.hansarhotels.com](http://www.hansarhotels.com)

### GETTING HERE

#### • FROM THE AIRPORT

Casuarina Cha Am by Hansar is approximately 40 km away from Hua Hin Airport (HHQ).

#### • BY TRAIN

Casuarina Cha Am by Hansar is approximately 30 km away from Cha Am Railway Station.

#### • BY TAXI

Taxis are always from Bangkok and cost approximately 2,500 THB per trip. Charges for toll fees are added to the fare on the meter.

#### • BY CAR

It takes about 2h30 to reach Casuarina Cha Am by Hansar by car from Suvarnabhumi airport. Rental car services apply various fares depending on the duration of the rental.